

2023

ANNUAL

Report

CMC

COMMUNITY MEDICAL CLINIC
OF KERSHAW COUNTY
OUTREACH - ACCESS - MEDICAL HOME



25 Years: A tale unfolds



How a small free clinic is making a big impact.

Table of Contents

Table of Contents	02	Giving and Taking Care	09
Letter from the CEO	03	Auxiliary Board of Advisors	10
About CMC	04	Event Highlights	11
Locations	05	Financial Report	12
2023 Statistics	06	The Team	13
Pinnacle Awards	07	Boart of Trustees	14
LiveWell Kershaw Coalition	08	Make a Difference Together	15

"I think particularly about Bobby Keiningham, if it hadn't been for a whole team of go-getters, he would have died."

BECKY YARBOROUGH, CHIEF OPERATIONS OFFICER

Bobby walked into the Mt. Pisgah location because he was out of options. Having suffered two stokes, he was terminated from his job and lost his insurance. "I went to DDS but was turned down but they sent me to Becky. I had a bad sore on my lip and I needed pain medicine. But, what it actually was, was that I had cancer on half of my face and throat. Becky and everyone stepped into help me."

Leveraging CMC's relationships and network, through the generosity and expertise of our referral partners, and with the love and dedication from his family, Bobby has successfully undergone 3 surgeries to remove the cancer from his face and throat.

Bobby Keiningham's story is a medical miracle that could not have been accomplished without YOUR donations. Through your generous support, we were able to help Bobby get the medical care he needed to save his life. "They have cured my cancer. It is gone. I have no cancer left."

For us, no more beautiful words were ever spoken.



REFLECTIONS

FROM THE CEO OF THE COMMUNITY MEDICAL CLINIC



Providing medical care and connecting resources to achieve a healthier Kershaw County has been CMC's mission for twenty-five years. Focusing on opportunities to empower individuals and communities to improve their health and well-being requires leadership, energy, and strong partnerships. How have we been able to achieve and sustain positive outcomes?

We look for **solutions, not problems**. It is well understood that housing, access to nutritious foods, livable wages, and many others outside the medical provider's office influence how well and how long we live. We are mindful of the available resources when designing pathways for our patients and clients.

Our mission, shared vision, and values are our compass that directs our actions, conversations, and priorities. We use real-time data to make **quality improvements** possible and meaningful.

The right person, at the right time, at the right place need a committed team that works at the top of their skill set. CMC's staff has the positive behaviors required to design processes and engage in conversations that lead to positive actions.

Principles, accountability, and outcomes are front and center. Providing holistic-centered care requires a deep understanding of the healthcare delivery system. **Systems thinking** requires taking a "hard look" at reality, and we must be willing to align changes that reflect the mission with the desired outcome.

Seek first to understand, then to be understood. We need to understand what impacts change. There is no "cake recipe" for this. Solutions and resources must match the needs of the patients and clients.

Committing to excellence and focusing on the big picture; **developing effective teams** based on trust by being vulnerable; embracing conflict; holding people accountable for their behaviors are the standards we accept not the standards we walk past.

How do you change things when change is hard? We apply three principles in **SWITCH thinking**: logic, motivation, and a clear path.

The first word in CMC is Community. **Health begins where we live**. Looking upstream is necessary to understand the solutions for health equity and achieve desirable health outcomes for those we serve.

Continuing to create strategies and individual goals that have measurable outcomes will result in positive changes for Kershaw County. Embracing that collective impact occurs when one plus one equals three or more; when the whole is greater than the sum of its parts.

CMC continues to commit hands, head and heart to serve the uninsured and underserved.

Go forward and do good,

Susan Witkowski



Susan Witkowski, CEO
Community Medical Clinic of
Kershaw County

ABOUT CMC

At CMC, we've got a three-part approach for making Kershaw County a healthier place to live. First, we offer medical care directly to folks who otherwise would not be able to see a doctor. CMC is holistic in its approach to care and we know that often medical attention is just the beginning of helping our patients lead a healthier lifestyle. Through Access Kershaw, we can connect people with other resources in the community that they might need. Lastly, through the LiveWell Kershaw Coalition, we are spearheading an effort to improve overall health in our community. It's all about working together to make sure everyone in Kershaw County can lead a happy, healthy life!

Direct Medical Services



We are a family-practice free medical clinic serving a medical home to the uninsured and underserved of Kershaw County. In addition to our nurse practitioners, CMC also offers chiropractic services, diabetes education, and breast cancer and cervical cancer screenings. We can also make referrals to providers who partner with us. These specialties include surgery, urology, nephrology, pulmonology, dermatology, breast specialist, gastroenterology, endocrinology, cardiology, pathology, radiology and emergency dental care. We also operate a School-Based Health Center at North Central High School.

Connecting Resources

Access Kershaw helps individuals navigate the maze of healthcare and connects them to available resources. Community Care Coordinators, along with Community Health Workers, assist with coordinated networks of care to provide a medical home and connection to timely affordable, high quality healthcare services and access to resources for low-income, uninsured individuals. We work to reduce health disparities and improve clinical outcomes, decrease avoidable hospital use and expand access to care.



Population Health



Living well starts with good health across the community. This is the premise fueling the LiveWell Kershaw Coalition, an initiative led by the Community Medical Clinic of Kershaw County. LWK works to foster collaboration between citizens of all ages, working in partnership with public and private sector organizations and schools to increase community awareness of health issues.

Place-Based Care WE are where YOU are.

CMC Foot Print

North Central High and Middle School School Based Health Center
3000 Lockhart Road, Kershaw

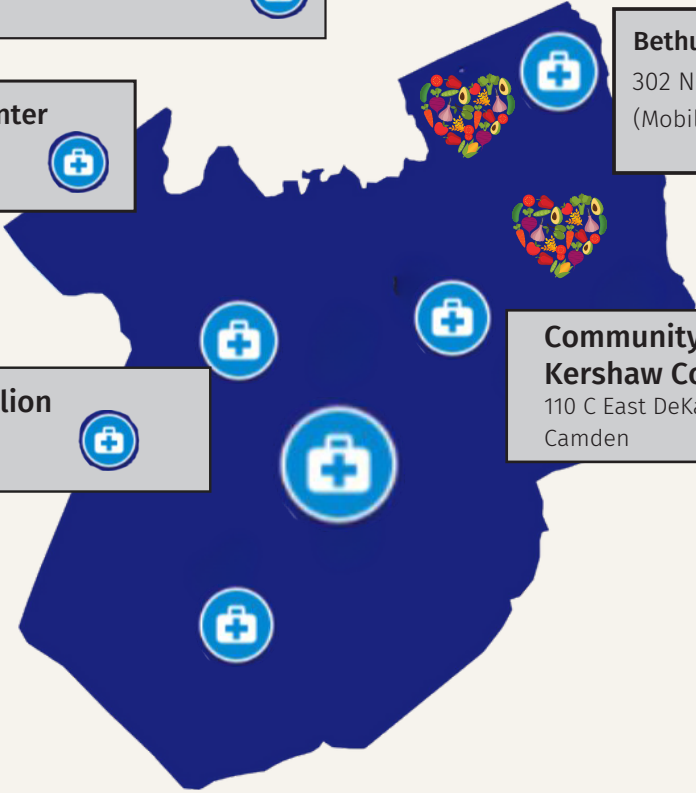
Mt. Pisgah Community Center
5160 State Road, Kershaw
(Mobile Nutrition)

Kirkwood Community Center
2684 Baron DeKalb Road,
Camden

Bethune City Hall
302 Norwood St. E., Bethune
(Mobile Nutrition)

MUSC Medical Pavillion
1165 HWY 1 South, Lugoff

Community Medical Clinic of Kershaw County
110 C East DeKalb Street,
Camden



2023 STATISTICS

Access Kershaw connects Kershaw County residents in need with local health professionals, as well as to a variety of support services they may need outside of medical care, such as food, housing, clothing and other crisis resources. **The Duke Endowment** has provided funding for this initiative since 2010 and **CMC** has been the grantee since 2015.

Medical Visits:

In-person and telehealth visits

3617

Diagnostic Tests

Blood work, xray, ultrasounds, mammograms, etc.

4336

Cancer Screenings

Breast, cervical and colon cancer screenings

193

Diabetes

CMC patients managing a diabetes diagnosis. [Learn more about CMC's diabetic program here.](#)

198

Total # Served by Access Kershaw

546

Specialty Care Connections

201

Number of Resources Connected for Clients

2114

Value of Direct Services:

Direct Services include medical visits, dental visits, ancillary visits, diagnostics, patient transportations and medications.

1.24 million

In-Kind Donations

Value of medications, diagnostic tests, office space and professional services donated to CMC

\$2.3 million

CMC's School Based-Health Center (SBHC), operates like a minute clinic and offers medical care to North Central High School students on campus.

90%

Students enrolled in our SBHC at North Central High School.

PINNACLE OF HEALTH & PINNACLE PARTNER AWARD WINNERS

Two outstanding recipients



At CMC's Annual "Friendsgiving," two very special awards were presented: one to our "Pinnacle of Health" recipient and one to our first-ever "Pinnacle Partner."

Our Pinnacle of Health winner, Richard Baker, has been a part of our CMC family for over two decades. His journey is one of resiliency, commitment, and transformation.

Facing the initial hurdles in his treatment plan, Mr. Baker embraced change wholeheartedly and figured out how to make visits to CMC.

However, what truly sets Mr. Baker apart is his impact on our community. He has not only taken charge of his health but also encourages others to do so. His efforts in advocating for healthcare in rural areas, assisting others with self-monitoring, and actively engaging in their care journey have been instrumental in building a healthier community.



Our Pinnacle Partner Award is designed to honor those who have not only demonstrated exceptional support for the Community Medical Clinic, but those who have played a vital role in building Kershaw County's satellite offices.

This year was the first year for our Pinnacle Partner Award and, as CMC is celebrating its 25th Anniversary, there was no more fitting recipient than Camden Family Care.

For a quarter of a century, Camden Family Care has been a cornerstone of support for the Community Medical Clinic. Their unwavering partnership has touched the lives of over 8,000 patients in Kershaw County, exemplifying what it truly means to be a community health advocate.

The team at Camden Family Care, under the guidance of Dr. Susan Munn, who accepted the award, and with the passionate involvement of Torill Nelson, FNP, and their stellar nurse practitioners, has been instrumental in providing equitable healthcare access.

Camden Family Care has been involved with CMC from participating in events, like the Clinic Classic, to direct involvement in patient care.

CMC patients were nominated by staff and partners were nominated and both were chosen by the CMC's Auxiliary Board of Advisors for their achievement of personal health goals alongside CMC and Access Kershaw staff.



OUR MISSION

To provide medical care and connect resources to achieve a healthier Kershaw County.

OUR VISION

A healthier Kershaw County where individuals and communities are empowered to take charge of their own health and well-being.

Livewell Kershaw Coalition

Overview: The LiveWell Kershaw Coalition began as a group of stakeholders setting out to conduct a Community Health Needs Assessment (CHNA) back in 2012. The coalition's primary efforts in its early years aimed to improve and promote healthy lifestyles for the youth of Kershaw County. The coalition has had the privilege of evolving alongside the county and broaden its scope to encompass a broader range of health priorities and foster a sense of shared accountability for the health of the county as a health amongst coalition members and residents. .

01 — **Identifying Health and Social Needs in Kershaw County:** This work is driven by the workgroups formed around the priority areas identified: mental health, resilient children and families, and housing. **LiveWell Kershaw** convenes the Mental Health and Resilient Children and Families and the United Way of Kershaw County convenes the Kershaw County Housing Partnership to advance strategies in these areas.

02 — **Embedding Results-Based Accountability (RBA) in the Community:** Utilizing the RBA framework we will continue to refine the strategies for each priority area. The indicators represented in our Scorecard will allow us to integrate contextual data, allow us to work our way further upstream and investigate community needs at a deeper level, develop a narrative in place of data that is not currently available, and provide space to improve data collection at the strategy level.

03 — **CHIP Development:** Through consensus building, CHIP workgroup members spent January and February of 2023 identified the preliminary set of indicators to guide strategy development.

The indicators selected demonstrate areas of significant need in the county and are inclusive of the work they are looking to do in the community and provide space for improved data collection at the strategic level.

04 — **CHIP Implementation:** Coalition members collaborated from June through December to refine and implement the action plan to turn the curve for each indicator included in the CHIP. While the 2023 CHIP will be housed in Scorecard throughout the next three years, it is crucial to recognize that this is a living document. Our Scorecard will change as the needs and priorities within the community evolve over the next three years.

TOGETHER WE ARE GIVING & TAKING CARE.



YOU are STILL an essential part of this story!

CMC partners are an integral part of developing innovative solutions to empower county residents to live healthier lives. Our story would not be told without you.

THE POWER OF TOGETHER

- 1) CMC donors get a dual benefit: taking care of others and taking care of their need to contribute to the community in a large and life-giving way.
- 2) Volunteers benefit by using their professional skills to take care of our friends and neighbors in Kershaw County who need it most.
- 3) CMC patients benefit by receiving free health care and by taking care of themselves so they can take care of their families.
- 4) Kershaw County benefits by taking care of our people, thus allowing our community as a whole to grow and thrive.
- 5) Our local hospital benefits by saving millions of dollars each year in unpaid services and reduced emergency room visits.

CMC's Auxiliary Board of Advisors



**Serving on the Auxiliary Board of Advisors are (from left):
Denver Hunter, Jill Fleischman, Charlotte Hodge, Gayle Todd, Mary Hill and Keri Boyce.**

Formed in 2022, CMC's Auxiliary Board of Advisors is a dedicated group of individuals who are passionate about making a positive impact in their community.

This board of advisors takes an active role in guiding the clinic's mission to transform lives. The board's primary role is to plan and organize community engagement events, including the annual Friends Giving event. Friends Giving brings CMC staff, volunteers, patients and partners together for food and fellowship during the holiday season.

Additionally, the board selects the recipients of the Pinnacle of Health and Pinnacle Partner award winners, which recognizes CMC patients who have not only benefited from the clinic's services but also pay it forward by helping others in their community.



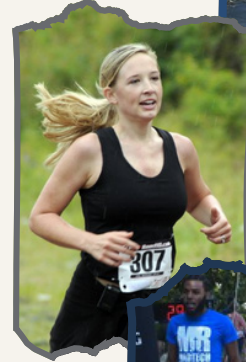
Event Highlights

CMC hosted two events in 2022 to raise both money and awareness of CMC's mission.

17th Annual Clinic Classic



The Clinic Classic is a 1-mile & 5k race that takes place in late April. The course winds through the beautiful historic district of Camden and encourages health and wellness. In 2023, the race began and ended at a new location at LSUMC in Camden.



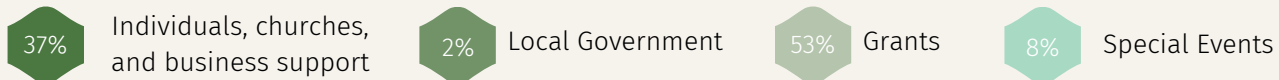
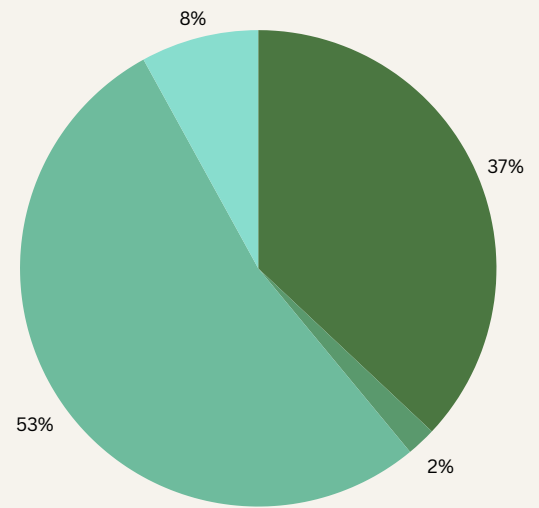
8th Annual Oysters and BBQ

The 8th Annual Oysters & BBQ Bash was a resounding success, drawing the largest number of attendees since we began hosting this event. The event was held at the Camden City Arena in mid-November and drew a diverse crowd eager to enjoy steamed oysters, BBQ, and live music. The Oysters & BBQ Bash has become a staple event in the community that supports CMC's mission.



Financial Report

CMC is not federally funded. All donations from individuals, churches, and corporate partnerships goes directly towards CMC providing direct medical care to those in need.



The Kershaw County Community Medical Clinic Statement of Activities for the year ended December 31, 2021 and December 31, 2022.

**KERSHAW COUNTY COMMUNITY MEDICAL CLINIC
STATEMENTS OF ACTIVITIES
FOR THE YEARS ENDED DECEMBER 31, 2022 AND 2021**

			<u>2022</u>	<u>2021</u>
	<u>WITHOUT DONOR RESTRICTIONS</u>	<u>WITH DONOR RESTRICTIONS</u>	<u>TOTAL</u>	<u>TOTAL</u>
OPERATING ACTIVITIES				
SUPPORT AND REVENUE				
Grant/contract income	\$ -	\$ 899,442	\$ 899,442	\$ 1,274,901
Contributions	(72,954)	234,812	161,858	233,175
Annual campaign	274,719	-	274,719	214,952
Special events	97,446	-	97,446	92,303
In-kind donations	2,324,270	-	2,324,270	3,031,410
Interest	2,131	-	2,131	2,303
Dividends	-	6,315	6,315	6,395
Realized gains	-	-	-	50,162
Unrealized gains	-	-	-	6,770
Local transfer	1,598	-	1,598	1,881
Net assets released from restrictions	1,188,709	(1,188,709)	-	-
TOTAL SUPPORT AND REVENUE	3,815,919	(48,140)	3,767,779	4,914,252
EXPENSES				
Program services	3,853,901	-	3,853,901	4,591,553
Supporting services:				
Fundraising	23,748	-	23,748	25,256
General and administrative	21,271	-	21,271	20,872
TOTAL EXPENSES	3,898,920	-	3,898,920	4,637,681
NET CHANGE IN NET ASSETS FROM OPERATING ACTIVITIES	(83,001)	(48,140)	(131,141)	276,571
NET ASSETS, BEGINNING OF YEAR	771,490	256,612	1,028,102	751,531
PRIOR PERIOD ADJUSTMENT	-	-	-	-
NET ASSETS, BEGINNING, RESTATED	771,490	256,612	1,028,102	751,531
NET ASSETS, END OF YEAR	\$ 688,489	\$ 208,472	\$ 896,961	\$ 1,028,102

The Team

Susan Witkowski, CHCQM, FABQAURP
Chief Executive Officer

Carol Baker, CMA
Certified Medical Assistant

Lynn Matthews
Patient Advocate

Sarah Beth Bradley, MSN, APRN, AGACNP-BC
Nurse Practitioner

Jessica Wilkes, DNP, APRN, FNP-BC
Clinical Operations Director

Taylor Brown
Americorps CHW

Becky Yarborough, RN, BSN, CEN
Chief Operations Officer

Kamela Clackum, LPN
Office Nurse

Sheri Baytes, RN
Community Care Coordinator

Kimberly Cogdill MSN, APRN, FNP-C
Nurse Practitioner

Eune'ce Bell, MSW
Community Care Coordinator

Susan Didato
Development Director

Tonya Gordon
Community Navigator

Maronica Durden
Development Director

DeAnne Wages, CMA, AAMA
Community Care Coordinator

Mary Hill, SHRM-CP
Business Office Manager

Jodi Rodgers, CHW
Access Kershaw Supervisor

Dawn-Marie Johnson
Culture and Communications Coordinator

Kathryn Lane, MPH
LiveWell Kershaw Coalition Director

Taryn M. Farrell
Graduate Research Assistant - LWK



“It’s just so incredible for me as a provider to know that I've helped somebody. When I leave work, I feel like I have made a difference in someone's life and I've really done my best to help them.”

SARAH BETH BRADLEY, NURSE PRACTITIONER

Board of Trustees

The Community Medical Clinic of Kershaw County's success is directly related to the hard work and dedication of our Board of Trustees. We couldn't serve the health needs of Kershaw County without their commitment to creating a healthier community.



Torill Nelson, FNP
Board Chair



Hank Green
Treasurer



Susan Collier



Thomas Cooper



William Cox



Harvey Galloway



Deborah Randolph



Gary Rivas



Billy Smith



CHERYL, CMC PATIENT

Where fear and hopelessness intersect, the opportunity for a miracle is born. For patient Cheryl Bigham, that miracle was in meeting Access Kershaw RN, Sheri Baytes.

Baytes met Cheryl, at one of her most vulnerable and scary moments. Bigham was 53 years old, had just been diagnosed with severe cellulitis in her left leg, and was hospitalized with NO insurance. Cheryl's AIC level was a 14 and she had diabetes, which she had been struggling with since she was diagnosed in her mid-30's! That meeting with Sheri was 7 years ago, and however poignant it was, it was only the beginning of the miracle journey.

"Sheri was so sweet and nurturing. She had been a bright light in my life ever since...it is through her and all the wonderful people at Access Kershaw that go out of there way and above and beyond to get me back on the road to recovery."

Let's Make a Difference TOGETHER

Join us in promoting health and wellness in Kershaw County! There are many ways you can support our work at CMC. Here is how you can empower individuals to take charge of their own health and well-being.

Community Engagement

We welcome new ideas and events that will help us to raise funds and awareness for CMC! Individuals, community organizations and businesses have hosted public and private events that directly benefit our patients and programs. If you would like to create, sponsor, or host a public or private event to benefit CMC, please contact us for further information or to assist you with event arrangements.

Volunteer

CMC is supported by well-trained and highly dedicated volunteers contributing hundreds of hours to the clinic each year. Our volunteers play a vital role in providing quality care to our patients as well as coordinating many special events

Make A Donation

Your financial or in-kind donation can make a huge difference in the lives of our patients. To support our cause, you can donate securely online at cmcofkc.org.



Leave a Legacy

You can ensure that countless people in Kershaw County have access to healthcare for generations to come by willing your estate to CMC. Creating a legacy in your will is simple. Talk with your attorney about including CMC in your Will or contact us with your questions.



"I CAN SEE!"



**DIRECTOR,
ACCESS KERSHAW,
JODI RODGERS**

"I picked up the phone and said, "Access Kershaw, this is Jodi," and I heard from the other side was "I can SEE!" and I said, "You can see already?" and he said YES!"

These are the words Jodi Rodgers waited 12 months to hear from her client. He came into CMC because he had cataracts so badly in both eyes, he couldn't see.

Thanks to YOUR generous donations, a life-changing moment unfolded for Jodi's client. Your support enabled us to help restore someone's eyesight, bringing light to their world. Your contributions to CMC make miracles like this possible every day.



Health Foundation of Kershaw County

John T. Stevens Foundation

SC Department of Health and Human Services

Better Health Through Better Partnerships

Creating sustainable healthy change in Kershaw County



PO Box 217
Camden, SC 29021
803.713.0806